



Himalayan Development Foundation Australia Inc

Securing a brighter future for Nepal's children



Why and What: we are connected to the people of the Himalayas through shared experiences of trekking, travel and mountaineering expeditions with the Nepalese people. We aim to “give something back” via rural community development programs, in areas where their own governments are struggling to make a difference. Our Aim is to strengthen, support and coach communities and to equip them with the skills to take charge of their own future over a 5-15 year program via co-funded activities across the “6 pillars of support” and woven with governance & leadership training.

Education – Healthcare – Child Safety – Infrastructure – Economic development - Environment

H DFA Project Locations

Nepal



Humla

Humla, in the far west of Nepal, is the second least developed district in Nepal and extremely remote. Population of around 4,700. Next area to support planned for 2018-19

Kathmandu

Capital city, population 1.4 million, great Kathmandu Valley ~5 million. Total Nepal Population ~25 million

Seti Devi

School rebuilding project after 2015 earthquakes, completed 2016
Initial Earth Quake Response: Emergency food, blankets and supplies to ~6,000 people in Gorkha / Sindulpachowk

Upper Indrawati

Started support Jan 2017
Sindhupalchowk District has a population of ~10,000. Focus is currently on health care and needs analysis

Ghunsa Region

Started Support 2014.
Population ~400. HDFA's first project area. Achievements: rebuild Ghunsa school, hostel, health post, hydro scheme, scholarship program, SMC governance training

H DFA: Rural Community Development

Sustainable development requires a balanced approach



EDUCATION

Education is key to breaking the cycle of poverty, having a ripple effect of opportunity that impacts generations.

Education enhances lives. It ends generational cycles of poverty and disadvantage and provides a foundation for sustainable development.



CHILD SAFETY

Give the children in Nepal a better start in life. We aim to provide children not only with a good education, but also a safe environment where all the needs of a child are provided for. Child trafficking issues and community education programs.



CONSERVATION

Helping communities adapt to the impacts of environmental events like earthquakes and flood, and promote sustainable use of natural resources to develop the economic development of the community level while conserving natural resources.



INFRASTRUCTURE

Good infrastructure is the backbone of a vibrant society. We will assist in the development of the supply of basic needs like energy, infrastructure, and waste systems where required on the basis the community part funds the costs.



HEALTHCARE

We work closely with communities to provide education on health issues, and facilitate provision of healthcare services.



ECONOMIC DEVELOPMENT

H DFA works with communities to enhance individual and community well-being and welfare by following a path of economic development that safeguards the welfare of future generations. The ultimate goal is the community no longer requires H DFA's assistance.





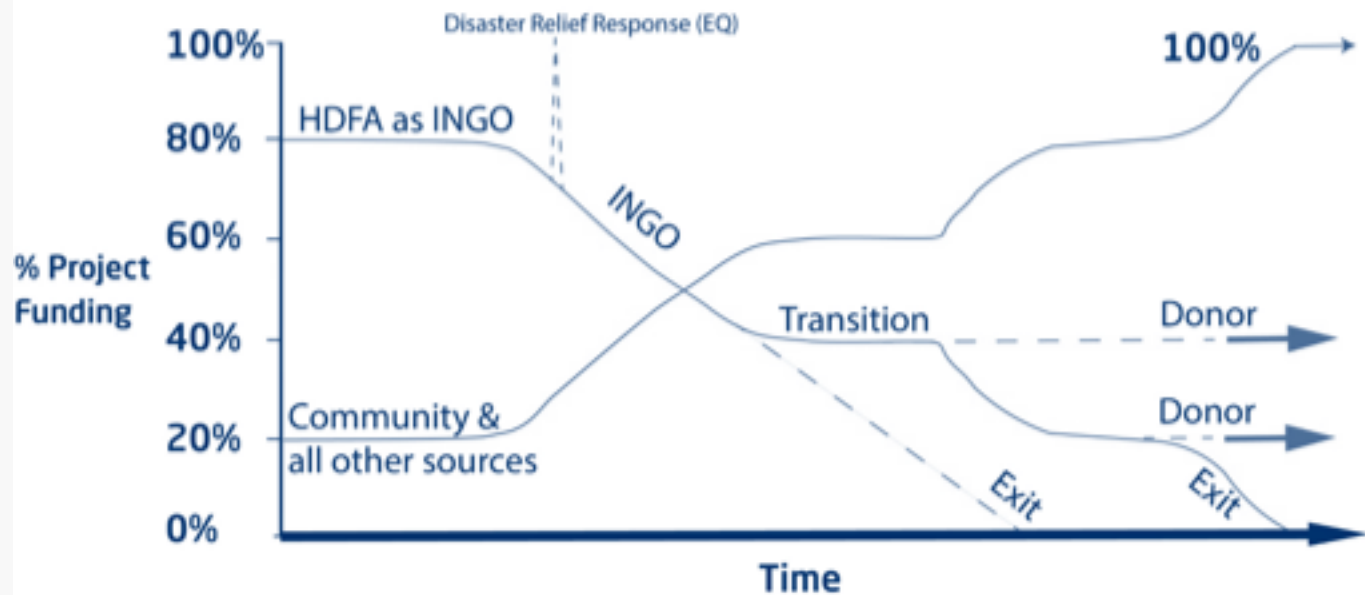
Our Approach

We believe sustainable development requires a balanced approach. We engage and consult with each community with an emphasis on six key pillars of development: Education, Child Safety, Healthcare, Economic Development, Infrastructure and Conservation. Where required we strengthen corporate governance and empower communities to lead themselves rather than taking a paternalistic welfare type approach.

Our aim is to engage with a community for 5-15 years after which we are no longer required. Nepal is experiencing a flow of young people from villages to cities and overseas, many of them end up working in poor unskilled positions (or worse) due to a lack of education and a background of poverty. This puts huge pressure on the villages, the cities and the young people themselves. HDFA is addressing the challenge of stemming the flow through improving education and livelihood improvements for people to remain and return to the remote areas, providing access to family planning via medical support to allow families to have a more sustainable number of children so a sustainable community can exist. We aim to develop skills and economic capacity within the communities so they may take care of their own future with responsibility and a level of financial security.

A fundamental tool to achieving these goals is to strengthen governance at the local community level such as school management and health post committees and encourage local communities to take on the ownership of their future.

Developing sustainable Communities



Community Development Projects

A short introduction into our project areas

Ghunsa

Ghunsa is a mainly Sherpa community in the Kangchenjunga Region of Eastern Nepal.

It is 5 days strenuous trek to the closest road head and airport at Taplejung.

1. Education
2. Health
3. Hydro electricity
4. Livelihood

Commenced 2014 –est 2024

~\$50 - 120K / year

Upper Indrawati

This project is based in Bhotang and Baruwa VDC's, in the Sindhupalchok District of central Nepal, which was hit hard in the 2015 earthquakes. It is ~ 7 hrs drive north of Kathmandu.

1. Health Post Operating
2. Baseline Study & Needs Analysis completed
3. Livelihood improvements underway
4. Education improvements 2019

Commenced Jan 2017 – est 2027

~\$150-300K / year

Humla

Scoping for the this project in the Far-West of Nepal is underway. This area is severely under supported and basic needs such as food are not met. People are in acute need.

1. Scoping study 2019
2. Fundraising late 2019
3. Initial health & Livelihood improvement focus 2020-30

Planned start 2020 to est 2030

Min \$150K / year

Key Dates – Corporate

Date	Event
13/3/2014	Founded HDFA Inc & Registered with ACNC
18/7/2014	ATO Endorsed Tax Free status, begin fundraising
23/12/2016	Apply for OAGDS with DFAT to operate a tax deductible Overseas Public Aid Fund
12/6/2018	Notified successful application approved by Minister for Foreign Affairs Julie Bishop to operate a Overseas Public Aid Fund
Est. 30/7/2018	Sign off by ATO for OAGDS status
... 2018 - pending	Sign off from Treasury on OAGDS status
Late...2018 - pending	Fundraising commences with own DGR compliant Overseas Public Aid Fund

Ghunsa Project Key Dates – the story so far

Date	Event	KPI's
Oct 2013	Visited Ghunsa School and Hostel – Kanchenjunga region, 6 days walk from nearest road in 2013; health post abandoned, teacher quality low, hydro scheme damaged in EQ: Upper Valley Population ~ 400	Only 15 children at School, 8 living on floor of one classroom of estimated 60 in valley; 0 health workers
2014	Found HDFA and commence needs analysis with Ghunsa Community, begin fundraising	25% children attend school in upper valley; 0 health staff
Anzac Day 2015	First of two devastating Earthquakes strike Nepal – not affecting Ghunsa	Distribute emergency aid to 6,000 people in Seti Devi region
July 2015	Complete Ghunsa School and Hostel ground up rebuild and attached temporary health post; health workers providing clinics, roving health patrols and immunisation program	20 children live at Hostel, 2 Health workers start work supporting 400 people in upper valley
2016	Install new generator in hydro scheme, rebuild damage to pipes and aquaduct, instigate user pays system and budgeting for future capital items	Electricity supplied to school and all of village to full 40KWatts system; install meter each house
2017	Complete extension to Hostel and add teacher staff	Hostel capacity 40 children
May 2018	All school age children attend school in valley for the first time; new health post fully funded by community with nursing and medications supported by HDFA	100% attendance school age children (55) in upper valley; first 100% self funded program rebuild of health post completed

Indrawati Project Key Dates – the story so far

Date	Event	KPI's
2016	Scoping study commissioned to assess community development needs of area closer to Kathmandu but still mountainous and not supported well by government	Identified the upper Indrawati area of population ~10,000; large region with existing health posts 1-2 days walk from some villages, 50% dropout rate of working age children (12) from school, child slavery/sales issues, reliance on external remittances to support population <ul style="list-style-type: none"> - poor crop choices, large family numbers - poor health and family planning support - sparse education opportunities.
Jan 2017	Opened 2 health posts with outreach patrols, full time community liaison officer conducted base line study and needs analysis	Provide health support to population of ~9,500 with 5,400 clinic visits in 12 months; Complete needs analysis and a formulated a 5 year plan
2018	Commenced livelihood improvement programs, continued with health posts and outreach programs – family planning meetings and home visits	Continued health clinic visits ~ 5,400/yr, family planning, immunisation programs, nutrition. Training for 200 farmers for livelihood improvements, introduction of fruits and alternative crops, use of greenhouses.

Statistic Summary

When & What	2014	2015	2016	2017	2018	Total
Builds						
Schools	-	1	1		-	2
Hostels	-	1		1 (extension)	-	1
Health Posts	-	1		2	-	3
Hydro - new	-	-	-	-	-	-
Hydro - repair	-	-	1	-	-	1
Operations						
Schools	1	1	1	1	1	1
- students	15	15	30	35	55	135
Hostels	-	1	1	1	1	1
- residents	-	15	25	40	40	120
Health Posts	-	1	1	3	3	3
- patients	-	Est 200	~350	5,800	Est 5,800	12,150
Livelihood programs	-	-	-	-	1	1
- participants	-	-	-	-	200	200
SMC training	-	-	1	3	tbc	4
-participants	-	-	15	~75	tbc	90



Ghunsa School - Kanchenjunga region
totally rebuilt July 2015

HDFA Project Locations

Nepal



Humla

Humla, in the far west of Nepal, is the second least developed district in Nepal and extremely remote. Population of around 4,700. Next area to support planned for 2018-19

Kathmandu

Capital city, population 1.4 million, great Kathmandu Valley ~5 million. Total Nepal Population ~25 million

Seti Devi

School rebuilding project after 2015 earthquakes, completed 2016
Initial Earth Quake Response: Emergency food, blankets and supplies to ~6,000 people in Gorkha / Sindhupalchowk

Upper Indrawati

Started support Jan 2017
Sindhupalchowk District has a population of ~10,000. Focus is currently on health care and needs analysis

Ghunsa Region

Started Support 2014.
Population ~400. HDFA's first project area. Achievement's: rebuild Ghunsa school, hostel, health post, hydro scheme, scholarship program, SMC governance training



Ghunsa School room converted to “hostel” (visit 2013)
8 children slept on this one “mattress” (5mm foam) little supervision



Ghunsa School Classrooms very cold and dark (2013)
- most time spent outside...



Teachers living at school in classroom (2013) – having to look after children 24x7



Local contribution of labour, materials and some cash



All materials carried in 5 days by porter to Ghunsa for rebuild



Rebuild classrooms warmer and more light



Himalayan
Development
Foundation
AUSTRALIA

Securing a brighter future
for Nepal's children

Volunteer
Teachers
in Schools

Teacher
Training

Health care
support

Nurse training





New hostel established July 2015
Teaching staff moved out to village accommodation



2017 April – warm well light classrooms, improved teaching standards



Enthusiastic community support for culture, education and health care improvements - co-contribution to projects



New Health Post established
HDFA lobbied for government funded Nursing staff commenced 2015



Earthquake Damaged Hydro Scheme - Repaired 2015
New Generator gift 2016

Ghunsa Village and region – the future!

Building stronger communities

Much of the hard work has been completed with a new school & hostel in 2015 (and extension 2017) and health post 2015 built and a restored electricity supply with corporate governance training for the SMC; the foundation has been laid for a brighter future.

The next 5 years 2019 - 2024

- developing governance skills down valley providing the framework for the region using Ghunsa as a model school and community
- education scholarships Yr 9-12 to attend high school as the Ghunsa School finishes at year 8
- SMC (governance) training programs success (2016-17) and introduction down valley in 2017 - are now being rolled out down valley to 21 further schools 2018-2020 on a co-funding model with local government funds 50/50.
- Livelihood improvement programs to commence 2019- 2024

Milestone!

- 2018 for the first time **ever** – all the children in the upper valley attended school
- Local community self funded a new purpose health post built in 2018
- Local community to take over the full operating costs of the health post in 2020

We aim to exit the upper valley in 2024 with the community able to take over funding and responsibility for their own future.



Upper Indrawati

7 hours drive North of Kathmandu – 45km!

We aim to work with the villages in the Upper Indrawati region to help improve the living standards for the local children and families.



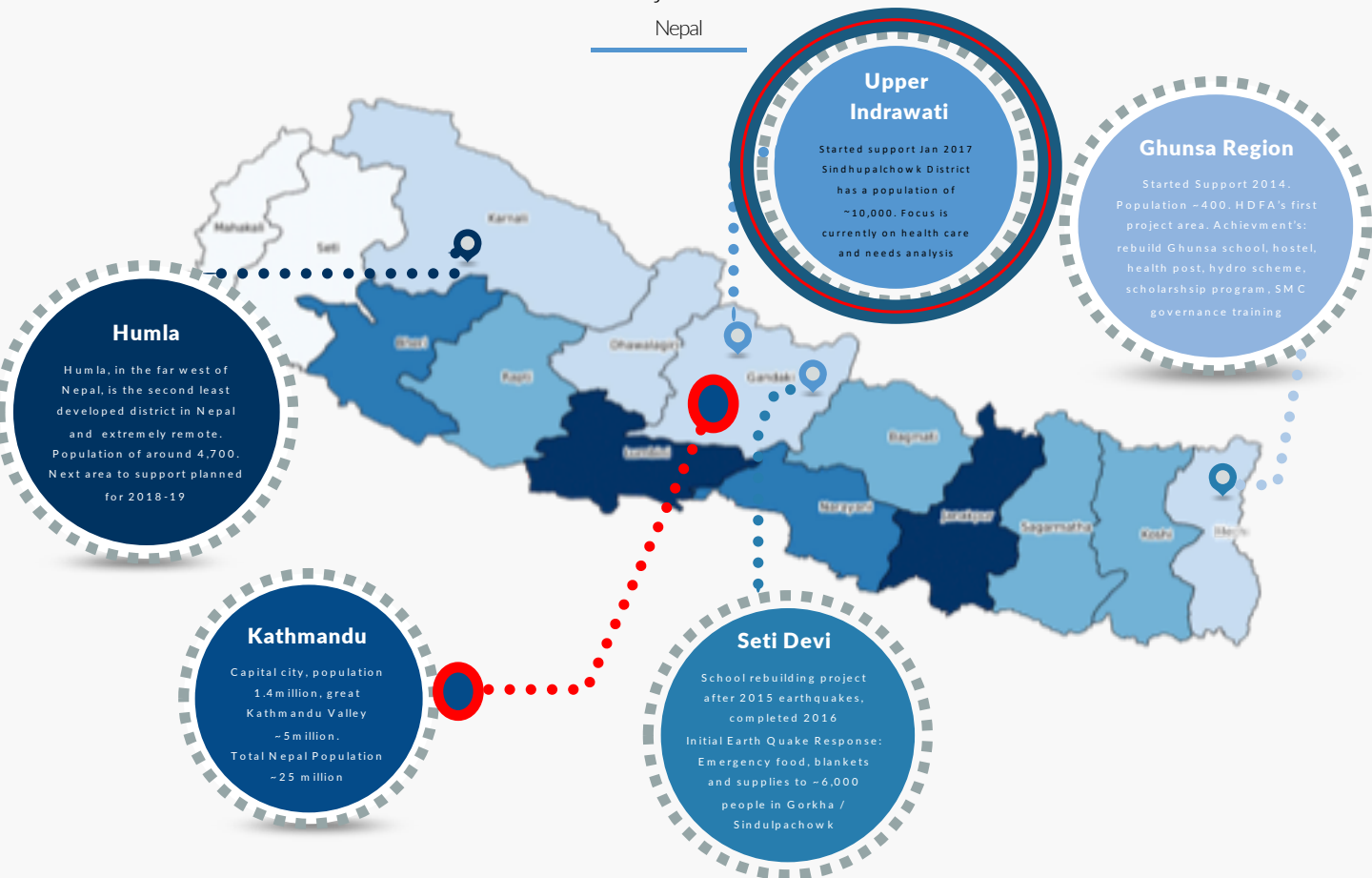
Stage 1: Improving health & medical facilities: building health posts and staff nurses in outreach clinics. Need analysis by development worker. 2017.



Stage 2 : Improving livings standards: Women's empowerment, adult literacy, teacher training, and agriculture practice improvements 2018 – ongoing; Supporting 9,450 people in 712 households

HDFA Project Locations

Nepal





Livelihood training 2018 – agriculture improvement training



Out Reach Clinics and home visits – part of holistic medical support



Health Post Balgaon

Opened Jan 2017 – first 3 weeks

- 380 patients
- Delivered 2 babies
- ~5,400 consults / year provided

सावुदायक स्वास्थ्य कार्यक्रम
बलगाँव गा.वि.स., सिन्धुपाल्चोक

उपलब्ध सेवाहरू
नेपाल सरकारको माध्यमबाट यहाँ सेवाहरू उपलब्ध छन् -
ओ.पि.स. सेवा, ए.एन.सी. सेवा, प.एन.सी. सेवा, परिवार नियन्त्रण सेवा, २४ घण्टा त्रुटि सेवा।

Community Health Project:
Service provision in this institution is available under the standard of government of Nepal - OPD Service, ANC Service, PNC Service, Delivery Service, Family Planning, 24 Hours Emergency Service

सिन्धुपाल्चोक PHASE फेज नेपाल



Balgoan Health Post (out reach clinic) operates \$4 / consult, including medications



School for 24 children, 1 teacher - perched on side of a mountain – Board and Sponsors Visit May 2017



Earth Quake Response

2015 Earthquakes killed ~ 9,500 people + extensive damage

HDFA funds deployed Manbu & Thumbakhar VDC
6,000 people helped- 1,000 homes Emergency Relief
Shelter, blankets, food, medical attention, safe water.



Stage 1: 25% Funds
Immediate Relief

Tarps, tents, blankets, food, water, medical attention



Stage 2 : 75% of Funds (more like 99%!)
Rebuild Communities

health posts, schools, re-establish water supplies

H DFA Project Locations

Nepal



Humla

Humla, in the far west of Nepal, is the second least developed district in Nepal and extremely remote. Population of around 4,700. Next area to support planned for 2018-19

Kathmandu

Capital city, population 1.4 million, great Kathmandu Valley ~5 million. Total Nepal Population ~25 million

Seti Devi

School rebuilding project after 2015 earthquakes, completed 2016
Initial Earth Quake Response: Emergency food, blankets and supplies to ~6,000 people in Gorkha / Sindulpachowk

Upper Indrawati

Started support Jan 2017
Sindhupalchowk District has a population of ~10,000. Focus is currently on health care and needs analysis

Ghunsa Region

Started Support 2014. Population ~400. HDFA's first project area. Achievement's: rebuild Ghunsa school, hostel, health post, hydro scheme, scholarship program, SMC governance training



Massive forces obliterated many rural centres



Many people living under tarps still





Child Safety at higher risk post earthquake



Many people living in makeshift housing

Temporary learning centres
will not last forever.

The risk is a generation of
children are not educated.





Seti Devi School opening of new classrooms sponsored by HDFA 2016 (no it's not the tent!)

Earthquake response

Rebuilding the Seti Devi School



The 170 students of the Seti Devi Primary School are able to enjoy school again. Classes had been able to continue at only a minimum level by utilising temporary learning centres (tents) and combining classes into the few rooms that survived the 2015 earthquake.

Rebuilding and repair work on the school started early 2016, using earthquake-resistant designs.

+ Emergency Response to 6,000 people providing blankets, food, water and emergency medications in the Seti Devi region





Sponsors Seti Devi School Visit April 2017



Seti Devi says thanks to all the donors that supported the rebuild of their school



Many schools still not rebuilt post earthquake as political and funding issues delay the rebuilding efforts – this is not HDFA’s focus



Andrew Stace



Anne Skipper



Brian Gilbert



Jo Arnold



Melissa Westgate



Chris M



Duncan Chessell

Board

Skilled board with Nepal experience

1

Andrew Stace
Chair

2

Anne Skipper, AM
Vice Chair

3

Brian Gilbert
Treasurer

4

Jo Arnold
Secretary

5

Melissa Westgate
Board Member

6

Chris Miller
Board Member

7

Duncan Chessell
Board Member & CEO